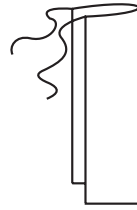


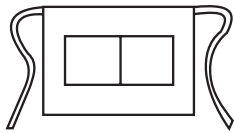
# APRONS



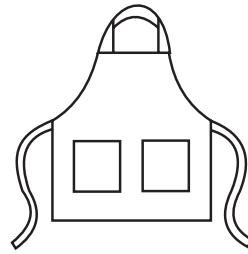
**Pouch**—standard size (7x10) Money holder with attachable belt loop. Your choice of pockets and style. APR-01



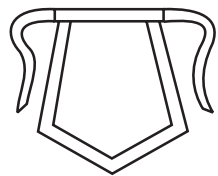
**Bistro / Continental Apron**—standard (38x36). Tie front or back. May add pockets. APR-06



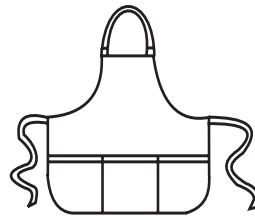
**Half Apron**—standard (20x10 {a}; 22x12 {b}; 20x13{c}). Tie front or back. Plain or multiple pockets. Single thickness unless otherwise specified. Squared or rounded corners. Pockets set on patch or folded up from bottom. APR-02



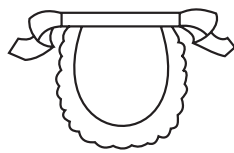
**Bib Apron**—standard (23x25 {a}; 25x29 {b}; 20x28 {c}). Single thickness unless otherwise specified. Standard D-ring closure. Tie front or back. Pocket styling patch or fold up from bottom. Square or rounded corners. Pencil pockets available. APR-09



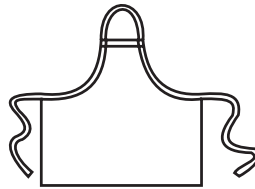
**Tea Apron**—standard (20x15). Tie back. May add pocket. Contrast trim. APR-03



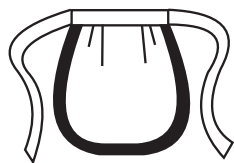
**Bib Apron**—as above. Variation of armhole, pockets, corners. APR-10



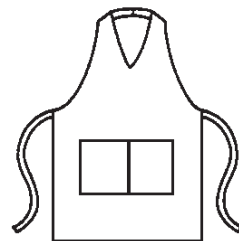
**Tea Apron**—standard (9x9 {a}; 13x15 {b}; 11x12 {c}). Tie Back, double thickness. May add pocket. Eyelet trim or contrast. APR-04



**Bib Apron Butcher Style**—standard (27x30). Single thickness. Tie front or back. Standard D-ring closure. APR-08



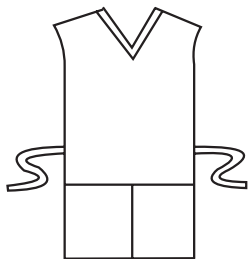
**Tea Apron**—standard (9x9 {a}; 13x15 {b}; 11x12 {c}). Tie back; double thickness. May add pocket. Lace or contrast trim. APR-05



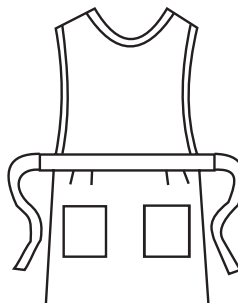
**Tux Apron**—standard (48x33). Vest style with wrap. Button closure around neck, tie front. Choice of pockets. Straight sides or standard "bat wings." APR-11

Prices may vary for alternate styling features. If you don't see it, ask ... [www.customuniformcompany.com](http://www.customuniformcompany.com)

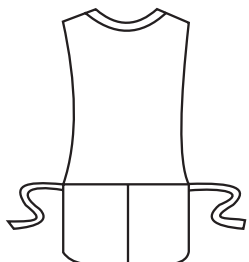
# APRONS



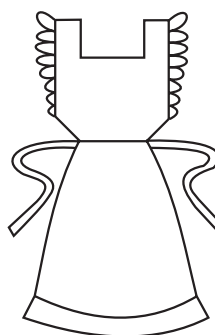
**Cobbler Apron**—standard (15x28). Front and back. Pull-over with side ties; snaps/Velcro, round/square corners, contrast bias, round/v-neck.  
APR-12



**Pinafore Apron**—standard (10x13+19x16 {a}; 10x13+35x24 {b}). Tie back, large bow. Adjustable button straps. Choice of pockets, ruffling—eyelet or fabric.  
APR-07



**Cobbler Apron**—as above. Variation of neck, corners. Choice of pockets.  
APR-13



**Pinafore Apron**—standard (10x13+19x16 {a}; 10x13+35x24 {b}). Choice of pocket-styling, neckline.  
APR-14

**NOTES:**

All aprons have double-stitched pocketing, bartacking at all stress points.

*Prices may vary for alternate styling features. If you don't see it, ask ... (303) 366-4777*