

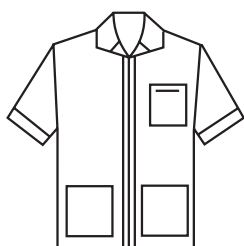
SMOCKS & BLAZERS



Smock—unlined men's. Elbow sleeve, stand collar, patch pocket. Button or zip front. SMO-04



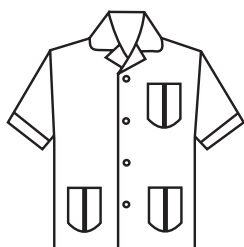
Blazer—full-lined women's notch lapel. Single breasted, 1 button. Upper, lower welt pockets. BLA-W-03



Smock—unlined men's. Convertible collar, zip front, patch pockets, cuff. May use trim. May choose button or zip front. SMO-05



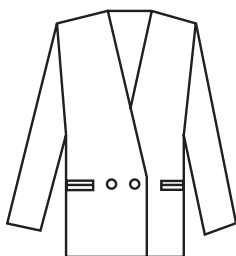
Blazer—full-lined women's notch lapel. Single breasted, 2 button. Upper welt, lower besom pockets. BLA-W-04



Smock—unlined men's. Convertible collar, button front, pleated pockets, cuffs on short sleeve. SMO-06



Blazer—full-lined men's notch lapel. Single breasted, 2 button. Upper welt, lower besom pockets. One inside pocket. BLA-M-04



Blazer—full-lined women's cardigan. 1 button, 1 to button. Besom pockets. BLA-W-01



Blazer—full-lined men's peak lapel. 3 button, 2 to button. Upper, lower welts. One inside pocket. May use contrasting trim, braid, or wear as is. BLA-M-06



Blazer—full-lined women's peak lapel. 3 button, 1 to button. Upper welt, lower besom pockets. BLA-W-02



Blazer—full-lined men's peak lapel. 2 button, 1 to button. Upper welt, lower besom pockets, one inside pocket. BLA-M-05

Prices may vary for alternate styling features. If you don't see it, ask ... (303) 366-4777