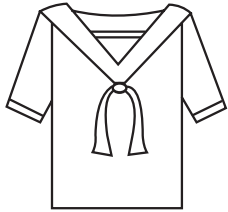


BLOUSES



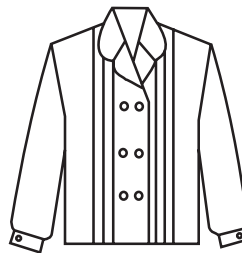
Sailor Blouse—women's Middy pull-over {a} or button front {b}. Optional detachable bow, trim on cuffs. Contrasting color and trim. BLO-W-06



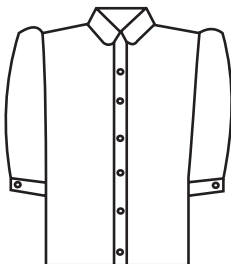
Blouse—women's long sleeved. Stand-up collar with keyhole, button, or zipper back. Button cuffs. BLO-W-03



Sailor Blouse---back view.



Blouse—women's pleated front, 3 button double breasted. Convertible collar with button cuffs. BLO-W-04



Blouse—women's ³/₄ gathered sleeve, button cuff and front. Rounded collar. BLO-W-01



Blouse—women's short sleeved jewel neck. Pleated front, sleeve. Keyhole closure. BLO-W-05



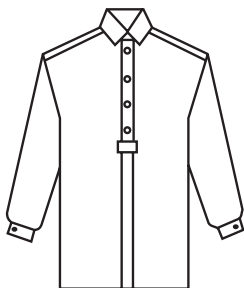
Blouse—women's long sleeved 2-piece collar. Concealed button front. BLO-W-02



Blouse—women's 2-piece collar long sleeved blouse. Second pocket optional. Button cuff, placket. May be button-down or laydown collar, long or short sleeved. BLO-W-07

Prices may vary for alternate styling features. If you don't see it, ask ... www.customuniformcompany.com

BLOUSES



Maternity Blouse—women's button front with or without placket. Partial or full button front. With or without pleating. 2-piece collar. Long or short sleeved. Button cuff. May add roll-sleeve tab.
BLO-W-08



Aviator Blouse—women's short sleeved or long sleeved. Button down flaps, 2-piece collar, placket front. May have pencil pocket. Shoulder straps. May add braid to straps and/or cuffs.
BLO-W-09



Peasant Blouse—women's short or long sleeved gathered. Multiple ruffling. Options: Colored ribbons throughout; eyelet or lace trim; contrasting colors or fabrics; drawstring neckline.
COS-W-BL-01

NOTES:

See men's Shirts for additional unisex styling.

Blouses available in long/short sleeved lengths, changeable pocketing and collar styling.

Prices may vary for alternate styling features. If you don't see it, ask ... (303) 366-4777