

COATS



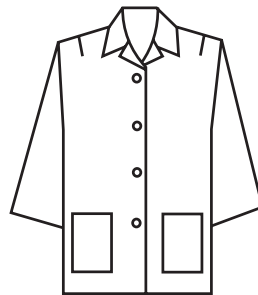
Chef Coat—unlined. Split cuffs. Short sleeves, single breast, knot buttons as per choice. May have trim around collar, cuffs. Optional belt in back. CHE-01



Counter Coat—unlined. COU-01



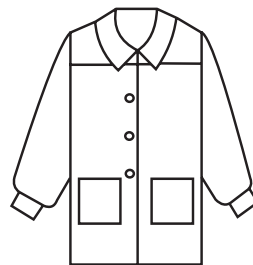
Buscoat—unlined. Choice of pockets. May add striping or braid. BUS-01



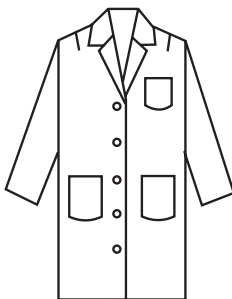
Smock—women's unlined. ³/₄ sleeve. Choice of pockets and/or pocket styling. SMO-01



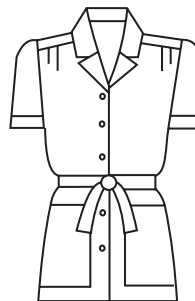
Buscoat—unlined. As above. Double breasted. Optional contrasting cuff. BUS-02



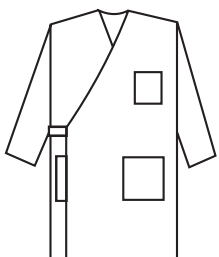
Smock—women's unlined Long sleeve, round collar, front yoke. SMO-02



Labcoat—unlined. Side-openings, vent. Choice of pockets. LAB-01



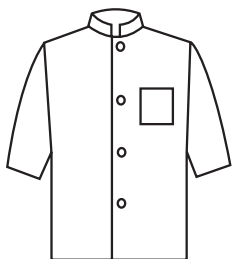
Smock—women's unlined May have contrasting trim, with or without belt. May have short sleeve or ³/₄ sleeve with inside roll-tabs. SMO-03



Wrap Labcoat—unlined. Styling choices as above. LAB-02

Prices may vary for alternate styling features. If you don't see it, ask ... www.customuniformcompany.com

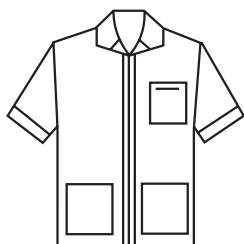
COATS



Smock—unlined men's. Elbow sleeve, stand collar, patch pocket. Button or zip front. SMO-04



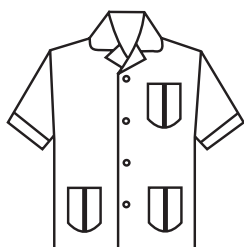
Blazer—full-lined women's notch lapel. Single breasted, 1 button. Upper, lower welt pockets. BLA-W-03



Smock—unlined men's. Convertible collar, zip front, patch pockets, cuff. May use trim. May choose button or zip front. SMO-05



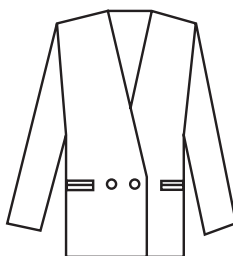
Blazer—full-lined women's notch lapel. Single breasted, 2 button. Upper welt, lower besom pockets. BLA-W-04



Smock—unlined men's. Convertible collar, button front, pleated pockets, cuffs on short sleeve. SMO-06



Blazer—full-lined men's notch lapel. Single breasted, 2 button. Upper welt, lower besom pockets. One inside pocket. BLA-M-04



Blazer—full-lined women's cardigan. 1 button, 1 to button. Besom pockets. BLA-W-01



Blazer—full-lined men's peak lapel. 3 button, 2 to button. Upper, lower welts. One inside pocket. May use contrasting trim, braid, or wear as is. BLA-M-06



Blazer—full-lined women's peak lapel. 3 button, 1 to button. Upper welt, lower besom pockets. BLA-W-02



Blazer—full-lined men's peak lapel. 2 button, 1 to button. Upper welt, lower besom pockets, one inside pocket. BLA-M-05

Prices may vary for alternate styling features. If you don't see it, ask ... (303) 366-4777

COATS



Coat—full-lined men's notched lapel. Single breasted, 4 button. Upper and lower welt pockets. One inside pocket. May add contrasting trim or braid.
COA-M-01



Federal Coat—full-lined with optional detachable vestee. Contrasting trim, braid, fabric as per request. Cut-away style. Back has 2 buttons at waist. Available with back center vent. One inside pocket. COS-W/M-CO-01



Coat—full-lined men's fold-back revere. Stand-up collar. May use contrasting fabric, colors, braid.
COA-M-02



Gambler's Coat—full-lined with notched lapels. 3 button single breasted, 2 lower flap pockets. Back has 2 buttons at waist. Back center vent. Slightly fuller from waist to hem.
COS-M-CO-02



Overcoat—full-lined men's 2-piece collar. 3 button, double breasted. Lower welt pockets, one inside pocket. Detachable cape. May use contrasting trim or braid. Additional buttons on cuff. COA-M-03



Overcoat—full-lined men's notched lapel. Single breasted, 4 button. Lower welt, one inside pocket. Optional belt in back, sleeve buttons. May have peak lapel or modify to double breasted styling.
COA-M-04

NOTES:

All blazers/coats may be made in men's or women's styling; may vary in choice of pocketing, button closure, back vents. All blazers/coats made with or without contrasting trim, braid, additional regalia.

2" easy-alter sleeves, sweat shields, hmo fronts, 2 inside pockets available upon request.

Prices may vary for alternate styling features. If you don't see it, ask ... www.customuniformcompany.com