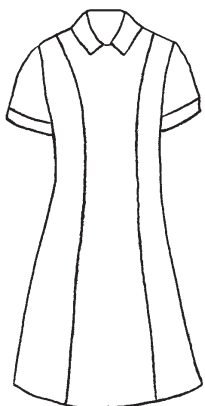
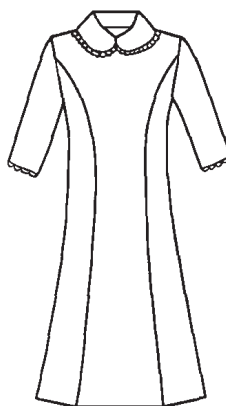


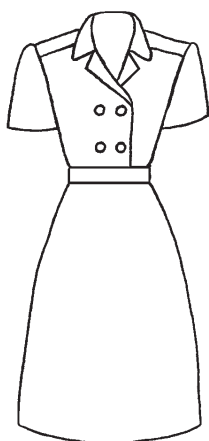
DRESSES & JUMPERS



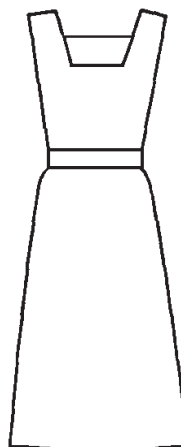
Dress—A-line zip-back short sleeve with detachable collar. Cuffs. Optional button or zip front. Collar may be permanent; cuffs omitted. Contrasting fabric, pocket if desired. DRE-01



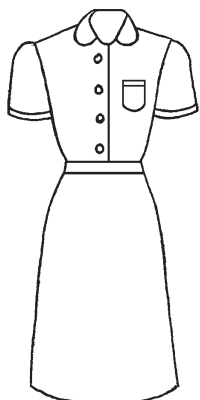
Dress—soft flare, arched front with $\frac{3}{4}$ sleeve. Jewel neck with detachable collar. Matching lace trim on sleeve. Zip back. May adapt to button or zip front. DRE-04



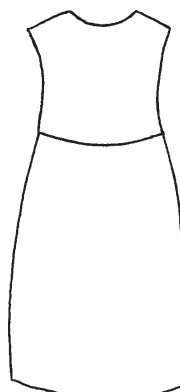
Dress—shirtwaist with set-in side pockets. Short sleeve. Double breasted 2 button. Choice shoulder strap, pleat in back with yoke. Contrasting trim. DRE-02



Jumper—With or without pockets. JUM-01



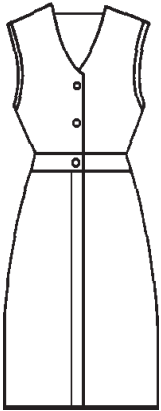
Dress—modified shirtwaist with single button styling; may add placket, alternate hidden zipper. With or without pocket. DRE-03



Maternity Jumper—with inset pockets. Button front or back. Trim around collar and/or hem available. JUM-02

Prices may vary for alternate styling features. If you don't see it, ask ... (303) 366-4777

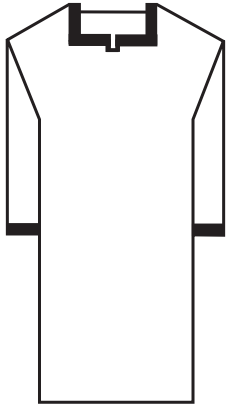
DRESSES & JUMPERS



Jumper—coat style with attached self-belt. Button top only, may add pockets, zipper, or buttons down front.
JUM-03

NOTES:

Most dresses made with standard 2" hem. Additional outlets, sweatshields, upon request.



Caftan—unisex styling pull-over. Ankle length. Braid around sleeve, shoulders, neck and hem if desired. Side vents at hem. Opening in front. May add zipper to back for closed front.
COS-W/M-DR-01



Peasant Dress—back closure of zipper or buttons. Scoop neck with added trim and/or lace/eyelet. Puffed sleeves, 1 set-in pocket. Added trim around hem. (apron additional—APR-04).
COS-W-DR-02

Prices may vary for alternate styling features. If you don't see it, ask ... www.customuniformcompany.com