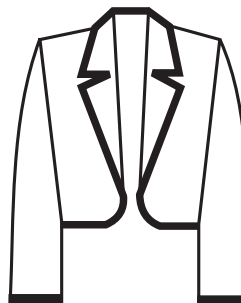


JACKETS & ETONS



Jacket—outerwear style. Raglan sleeve, slash pocket, permanent or zip-in/zip-out liner. Knit cuffs, waistband. Convertible collar. May add additional pockets, hood, change collar to knit. Unisex. JAC-W/M-01



Eton—men's rounded front bolero style. Notch lapel or without collar. Braid, trim or embroidery additional. COS-M-ET-01



Jacket—as above with set-in sleeve, Italian knit collar. JAC-W/M-02



Eton—women's & men's. 1 button link/single breasted. Notch lapel. ETO-W/M-04



Eton—women's & men's shawl collar. Single breasted, 3 button. ETO-M/W-01



Eton—men's 5 button double breasted. Stand-up collar. ETO-M-02



Eton—men's & women's 3 button double breasted. Notch lapel with welt pockets (real or imitation). ETO-W/M-05



Prices may vary for alternate styling features. If you don't see it, ask ... (303) 366-4777

JACKETS & ETONS



Eton—men's & women's 7-8 button single breasted. Stand-up collar. ETO-W/M-06



Eton—men's squared front bolero with peak lapel. Choice of embroidery, braid, or added decoration. COS-M-ET-02



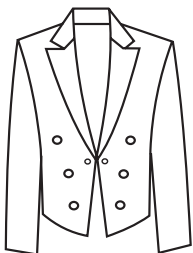
Eton—men's & women's 2 button single breasted cardigan. ETO-W/M-07



NOTES:

Lined or unlined, 2" easy-alter sleeve, sweat-shields, 2 inside pockets, upon request.

Shoulder straps, loops; shoulder knots and/or cords; citation cords, decorative braid, trim, embroidery available upon request].



Eton—(as above ETO-W/M-04). "V" angled 6 button arrangement for decorative design. ETO-W/M-08

Prices may vary for alternate styling features. If you don't see it, ask ... www.customuniformcompany.com