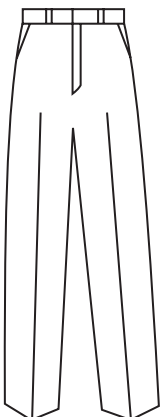
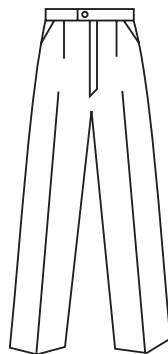


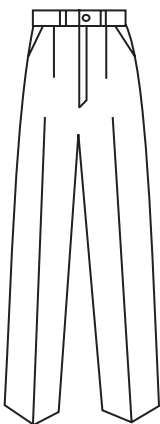
# PANTS



**Pants**—men's. Plain front. Straight leg, gripper closure. Belt loops, 2 side and hip pockets. PAN-M-01



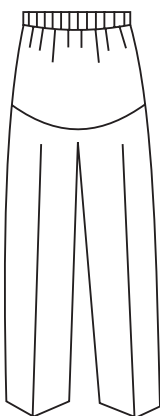
**Pants**—women's. Plain front slacks. Side pockets, straight leg, button front. May have belt loops. PAN-W-04



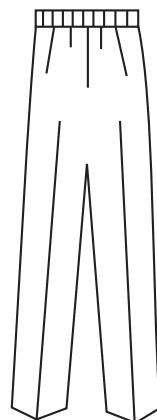
**Pants**—men's. Pleated front, button closure. As above. PAN-M-02



**Pants**—women's palazzo wide leg. Elasticized pull-on waist or button front. PAN-W-05



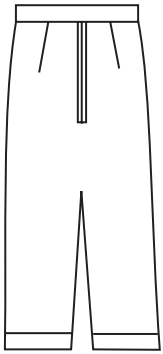
**Maternity Pants**—women's with stretch panel. Elasticized pull-on waist. PAN-W-03



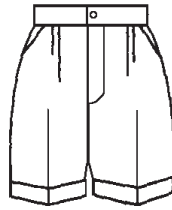
**Pull-on Pants**—men's or women's. Elasticized waist. May add side pockets. PAN-W/M-06

*Prices may vary for alternate styling features. If you don't see it, ask ... (303) 366-4777*

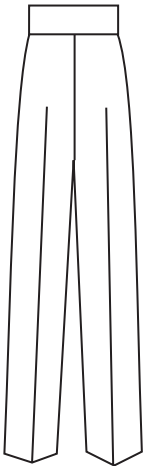
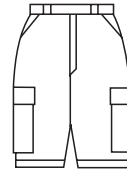
# PANTS



**Knickers**—women's or men's. Zipper front. Straight leg, or fuller "plus-4's." Belt loops optional. May have side and/or hip pockets. Adjustable band below knee. PAN-W/M-07



**Shorts**—women's or men's camp style. Zip front, 2 side pockets. May add hip pockets (patch), cuff, bush pockets. SHO-W/M-01

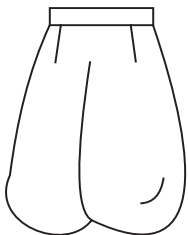


**Band Pants**—men's or women's high-waist. Adjustable with zipper and Velcro. May or may not have side pockets. PAN-W/M-08

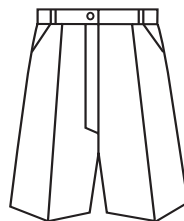


**Shorts**—women's or men's draw-string pull-on. Side pockets may be added. SHO-W/M-02

(May lengthen for pant, with or without elasticized cuff—PAN-W/M-09)



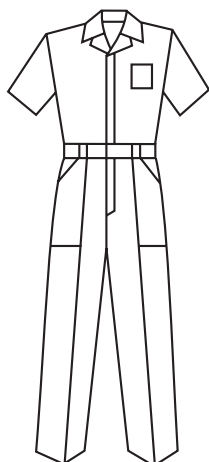
**Arabian Bloomers**—men's. Adjustable waist zippers. Optional side pockets. Velcro cuff or elastic below knee. May have contrast trim, braid. COS-M-PA-01



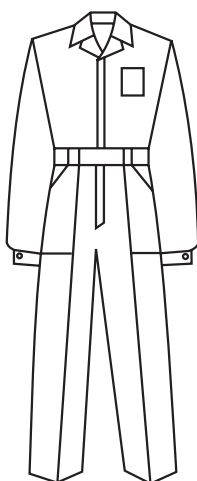
**Shorts**—men's or women's standard style, plain or pleated front. Zip front. 2 side pockets. Belt loops optional. No cuff. SHO-W/M-03

Prices may vary for alternate styling features. If you don't see it, ask ... [www.customuniformcompany.com](http://www.customuniformcompany.com)

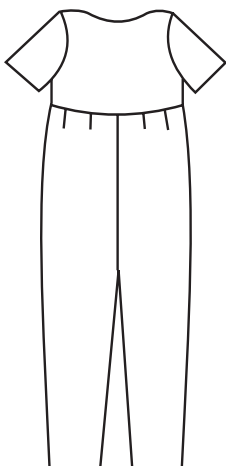
# PANTS



**Jumpsuit**—men's or women's short sleeve convertible collar. May have buttons, snaps or zipper. (Zipper may be 1 or 2-way.) Concealed placket or not. 2 side and hip pockets. Additional pockets available. Back yoke, action shoulders, attached self-belt options. JUM-W/M-01



**Jumpsuit**—women's or men's long sleeved as above. JUM-W/M-02



**Maternity Jumpsuit**—may have button front. Eliminate sleeves for romper style. JUM-W-03

**NOTES:**

Pants can be made with full elastic or 1/2" elasticized waist, suspender buttons, adjustable waist tabs. Dress, Western, or military cut.

Belt loops upon request standard (1/2"), keystone, or tunnel (1"-5"). Pants made open bottom, or hemmed to length.

All zippers are metal; length includes 3" hem allowance.

May have inside watch pocket, variable side-pocket styling: 1/8, 1/4, Western; variable hip-pocket styling: Besom, patch, Western, flap (with or without tab). 1 or 2 pockets on hip.

*Prices may vary for alternate styling features. If you don't see it, ask ... (303) 366-4777*