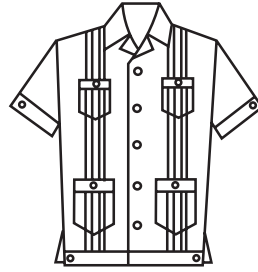


SHIRTS



Shirt—men's convertible collar 2 pocket industrial styling with button cuff.
SHI-M-01



Guayabera Shirt—men's. 4 pocket pleated front, convertible collar, button cuff; hem with side vents.
SHI-M-05



Aviator Shirt—men's shoulder straps with buttons. Placket front, 2 pocket flap styling. Long or short sleeved. May have pencil pocket, pleated pockets.
SHI-M-02



Safari Shirt—men's with shoulder straps, cuff, pleated pockets with flaps. Placket front, 2 lower additional pockets, optional. Long or short sleeved.
SHI-M-06



Shirt—men's short sleeved shirt with pocket. Two-piece collar. May use convertible collar styling, add cuffs, eliminate placket.
SHI-M-03



Racing Shirt—men's short sleeved. Front and back yoke, optional pockets. Multiple designs. SHI-M-07



Camp Shirt—unisex. 1 or 2 pocket convertible collar with cuff. Optional yoke. Sport shirt. SHI-M-04



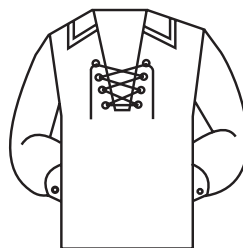
Shirt-Jac—men's long sleeved with shoulder straps, 2 pockets, button front, stitched hem, button cuffs. Convertible collar.
SHI-M-08

Prices may vary for alternate styling features. If you don't see it, ask ... www.customuniformcompany.com

SHIRTS



Shirt-Jac—men's short sleeved as above with additional trim, adjustable side-tabs. SHI-M-09



Peasant Shirt—men's. May use grommets with laces. COS-M-SH-02



Cowboy/Cowgirl Shirt—men's and women's Western styling. Front, back yoke. Long or short sleeve. Placket front, button cuff. Snap or button closure. SHI-W/M-10



Peasant Shirt—men's. Stand-up collar, yoke front and back. COS-M-SH-03



Drum & Bugle Corps Shirt—women's and/or men's pull-over. Multiple designs. COS-W/M-SH-01

Prices may vary for alternate styling features. If you don't see it, ask ... (303) 366-4777