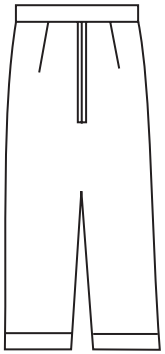
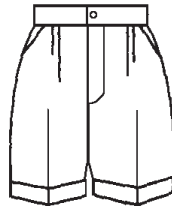


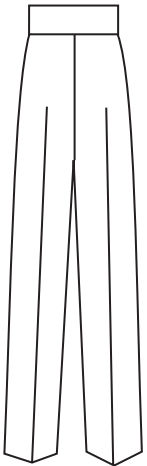
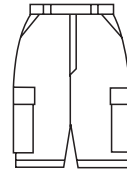
# PANTS & SHORTS



**Knickers**—women's or men's. Zipper front. Straight leg, or fuller "plus-4's." Belt loops optional. May have side and/or hip pockets. Adjustable band below knee. PAN-W/M-07



**Shorts**—women's or men's camp style. Zip front, 2 side pockets. May add hip pockets (patch), cuff, bush pockets. SHO-W/M-01

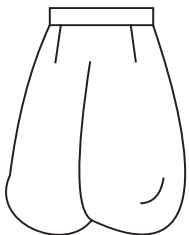


**Band Pants**—men's or women's high-waist. Adjustable with zipper and Velcro. May or may not have side pockets. PAN-W/M-08

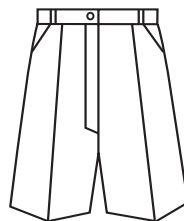


**Shorts**—women's or men's draw-string pull-on. Side pockets may be added. SHO-W/M-02

(May lengthen for pant, with or without elasticized cuff—PAN-W/M-09)



**Arabian Bloomers**—men's. Adjustable waist zippers. Optional side pockets. Velcro cuff or elastic below knee. May have contrast trim, braid. COS-M-PA-01



**Shorts**—men's or women's standard style, plain or pleated front. Zip front. 2 side pockets. Belt loops optional. No cuff. SHO-W/M-03

Prices may vary for alternate styling features. If you don't see it, ask ... [www.customuniformcompany.com](http://www.customuniformcompany.com)