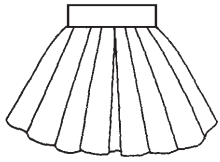
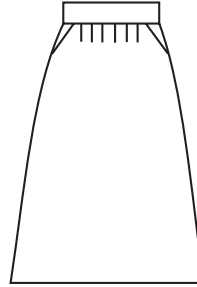


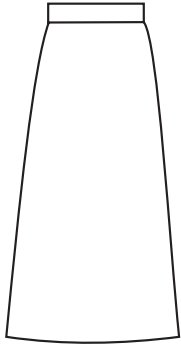
# SKIRTS



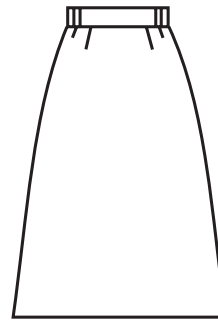
**Cheerleader Skirt**—pleated. SKI-W-01



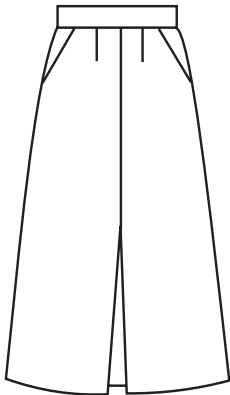
**Skirt**—side pockets, gathering. Dirndl style. SKI-W-12



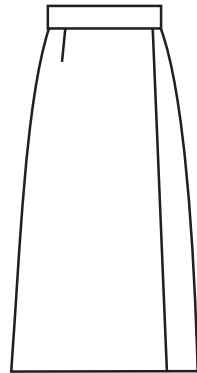
**Skirt**—straight, no pockets. SKI-W-02



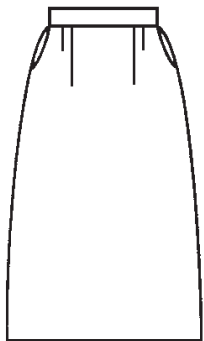
**Skirt**—elasticized sides at waist. Dirndl style. SKI-W-05



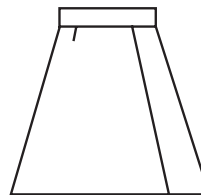
**Culotte**—shirred, slight gathering at waist. SKI-W-03



**Skirt**—straight wrap. SKI-W-06



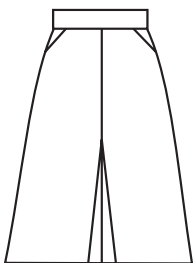
**Skirt**—side pockets, shirring. SKI-W-04



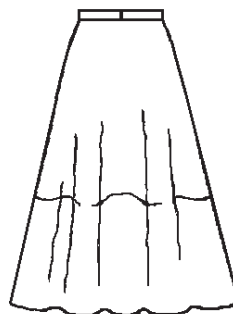
**Skort**—skirt-short with elasticized pull-on waistband. Gathered, with optional pockets. SKI-W-07

Prices may vary for alternate styling features. If you don't see it, ask ... [www.customuniformcompany.com](http://www.customuniformcompany.com)

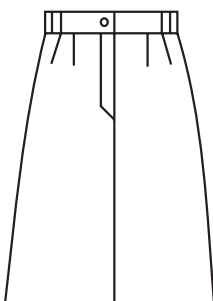
# SKIRTS



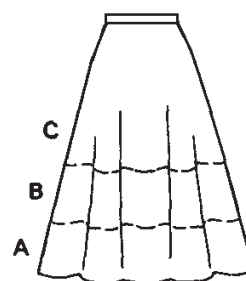
**Skirt**—A-line style with center pleat. Shirring at waist, side pockets. SKI-W-08



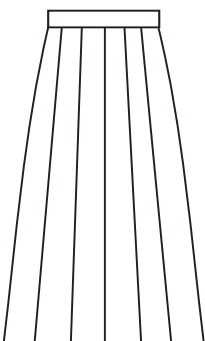
**Peasant Skirt**—ballerina length. Zipper. May add bottom ruffle. COS-W-SK-01



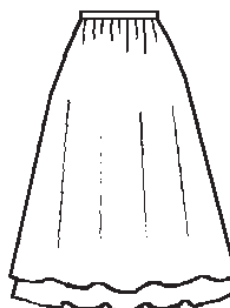
**Skirt**—4-panel, zip front, belt loops. Optional pockets. SKI-W-09



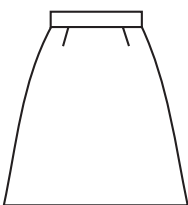
**Peasant Skirt**—as above in mid-calf {a}, knee {b}, and mid-thigh {c} lengths. COS-W-SK-02



**Concert Skirt**—full or ballerina length, circle or 1/2 circle. Gathered. SKI-W-10



**Peasant Skirt**—as above. Gathered with ruffled underskirt—attached or separate. COS-W-SK-03



**Mini-Skirt**—short, shirred. Pockets optional. Additional styling available. SKI-W-11

**NOTES:**  
Most skirts made with 3" adjustable hem. Most may have side or back closure—button or gripper with zipper. Velcro available for wider waistbands and adjustability. Side tabs also available for adjustability. Hem lengths are standardized—may be specified by customer, however.

Prices may vary for alternate styling features. If you don't see it, ask ... (303) 366-4777