

# COATS & SMOCKS



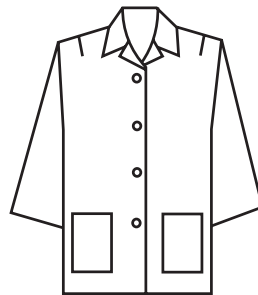
**Chef Coat**—unlined. Split cuffs. Short sleeves, single breast, knot buttons as per choice. May have trim around collar, cuffs. Optional belt in back. CHE-01



**Counter Coat**—unlined. COU-01



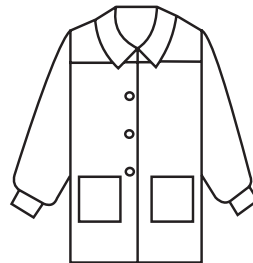
**Buscoat**—unlined. Choice of pockets. May add striping or braid. BUS-01



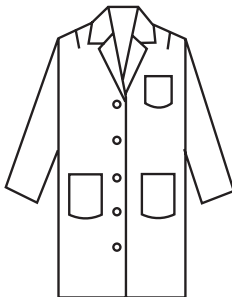
**Smock**—women's unlined. <sup>3</sup>/<sub>4</sub> sleeve. Choice of pockets and/or pocket styling. SMO-01



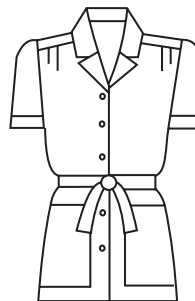
**Buscoat**—unlined. As above. Double breasted. Optional contrasting cuff. BUS-02



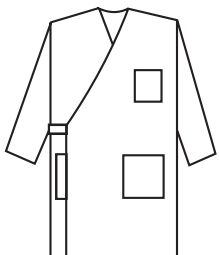
**Smock**—women's unlined Long sleeve, round collar, front yoke. SMO-02



**Labcoat**—unlined. Side-openings, vent. Choice of pockets. LAB-01



**Smock**—women's unlined May have contrasting trim, with or without belt. May have short sleeve or <sup>3</sup>/<sub>4</sub> sleeve with inside roll-tabs. SMO-03



**Wrap Labcoat**—unlined. Styling choices as above. LAB-02

Prices may vary for alternate styling features. If you don't see it, ask ... [www.customuniformcompany.com](http://www.customuniformcompany.com)