

# Concepts In Uniform Design



## Custom Uniform Company



Concepts In Uniform Design  
Custom Uniform Company

Division of Dave Hindlemann & Assoc., Inc.  
1445 Dayton Street  
Aurora, CO 80010-3232 USA

Phone: (303) 366-4777  
Fax: (303) 366-0203  
E-mail: [customuniformco@earthlink.net](mailto:customuniformco@earthlink.net)  
<http://www.customuniformcompany.com>

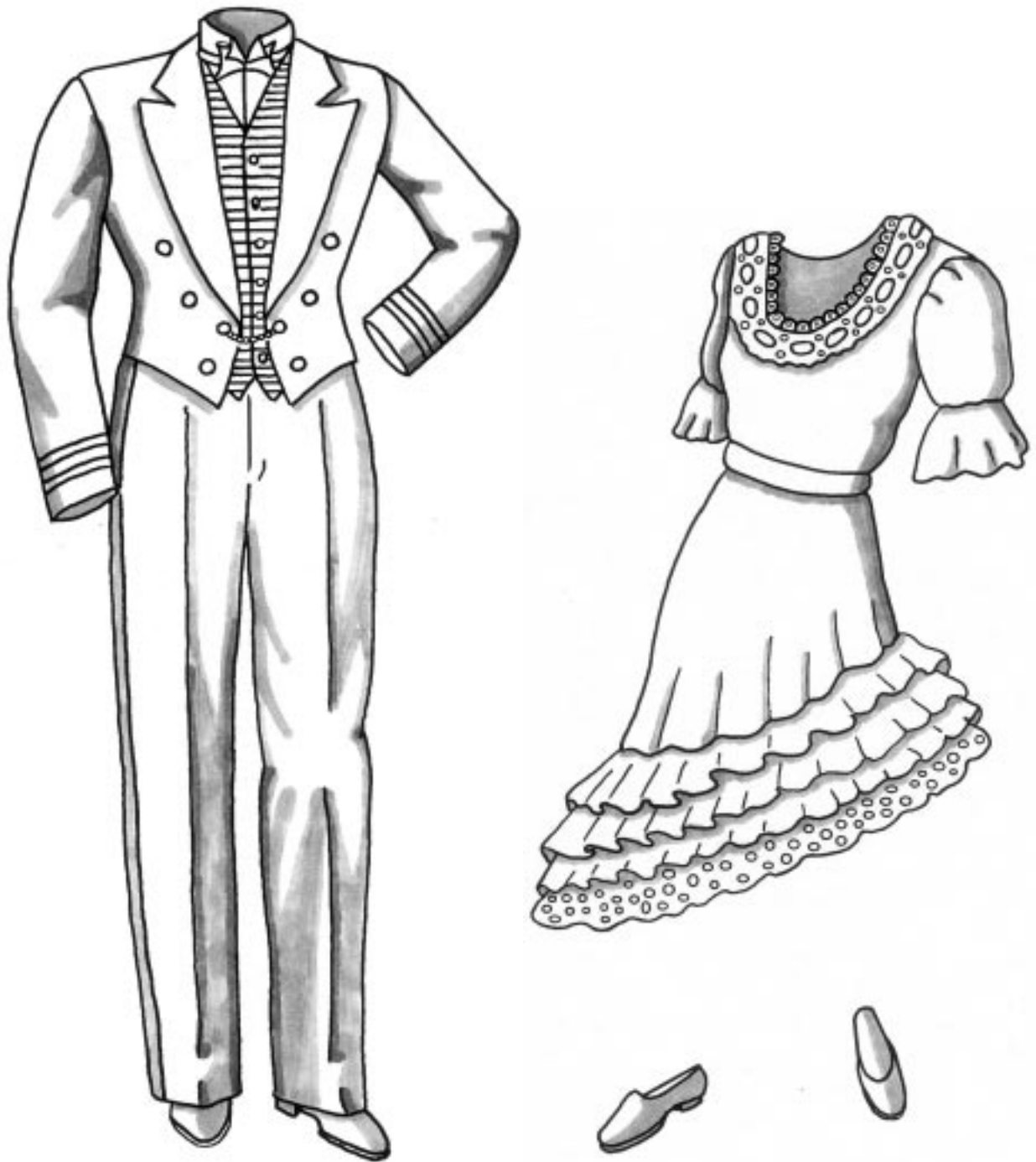
COPYRIGHT © June, 1997  
The Scarlet Letter Press  
Text & Design Debra Hindlemann Webster  
Illustrations & Layout Jo Berger

ALL RIGHTS RESERVED. No part of this work covered by the copyright hereon may be reproduced or used in any form or by any means graphic, electronic, or mechanical, including photocopying, recording, taping, or information storage and retrieval systems without the written permission of **Custom Uniform Co.**

# TABLE OF CONTENTS



ABOUT YOU & THIS CATALOGUE .....	1
ACCESSORIES .....	2
(cummerbunds, drapes, hats, scarves, ties, collars)	
APRONS .....	3
BLOUSES .....	5
COATS .....	7
(blazers, doormen coats, chef coats, labcoats, smocks)	
DRESSES .....	10
(includes jumpers)	
JACKETS .....	12
(etons, outerwear)	
ENSEMBLES	
Hotel .....	14
Shrine .....	15
Peasant .....	16
Costume .....	17
Casual .....	18
Corporate .....	19
PANTS .....	20
(includes jumpsuits, shorts)	
SHIRTS .....	23
SKIRTS .....	25
(includes culottes)	
VESTS .....	27
TRIMSTYLES .....	29
(includes braid, embroidery)	
SIZING .....	32
ORDERING INFORMATION .....	34
INDEX .....	35



Frontispiece  
Uniform Ensembles

See Pages 14-19

# CONCEPTS IN UNIFORM DESIGN



## About You and This Catalogue

This is a catalogue of uniform ideas.

Since 1936, we have designed and manufactured garments for the uniform industry.

The choice of style, fabric, color, quantity, is yours.

You may pick one of our designs; you may combine detailing from several of our designs. We will use your fabric or ours; we will use your labels or ours.

You may send us your samples; you may send us your drawings. We are happy to work with you and your specific needs.

We have many patterns: You may use ours; you may provide your own; or, for a nominal charge, we will have them designed and graded for you.

We are a custom house. We do not stock our merchandise. Every order we process is unique.

Screen-printing, embroidery, identity patches are available on a per-order basis.

Accessories are also available in order to complete your design.

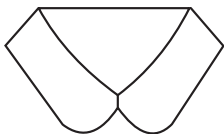
Pricing is based on fabric, styling, and quantity. Each order is priced separately.

Garments are manufactured according to proportioned stock patterns. Our styles are customized; our sizing is not.

Delivery is based on your need, complexity of your order, and our production schedule. 4-6 weeks is the norm. It may take more or less time, depending on the above factors.

We look forward to working with you.

# ACCESSORIES



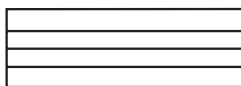
**Collar**—detachable, for dress. With or without trim. Your choice of fabrics and colors. COL-R-1



**Cummerbund**—4" no pleat. All around style. Velcro closure. CUM-40



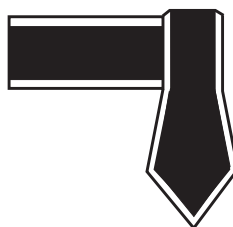
**Scarf**—3-corner or square. To your specification in size, shape, color, fabric. SCA-3-1



**Cummerbund**—6" 3 pleat. All around style. Velcro closure. CUM-63



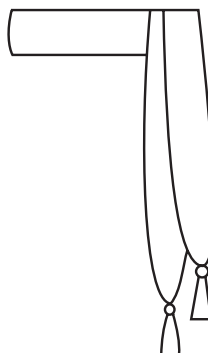
**Beret**—with or without band. Elasticized or not. BER-B-1



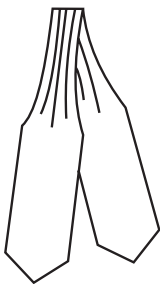
**Single Drape**—to your specification. With or without tassel and/or soutache. DRA-S-1



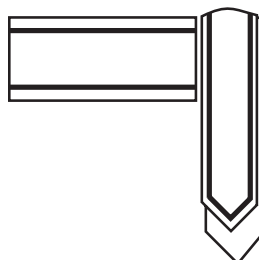
**Chef Hat**—adjustable. Fabric and color your choice. HAT-C-1



**Cummerbund With Sash**—single or double drape, with or without tassels. CUM-40 / DRA-D-2



**Ascot**—numbers of styles available—self-tie or pre-tied. Your choice of fabric, color, specifications. ASC-1



**Double Drape**—to your specification. As above. Loop to fit around cummerbund. DRA-D-1

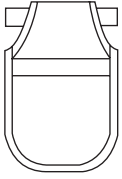


**Baldric**—adjustable with Velcro, separate or attached to the garment. To your specification in color, braid, or cloth stripe. BAL-1

**NOTES:**  
Our cummerbunds can be made at varying widths, with varying numbers of pleats.

*Prices may vary for alternate styling features. If you don't see it, ask ... (303) 366-4777*

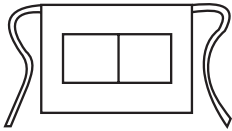
# APRONS



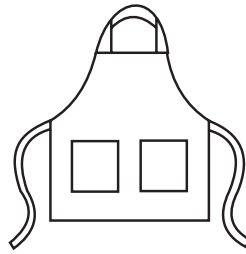
**Pouch**—standard size (7x10) Money holder with attachable belt loop. Your choice of pockets and style. APR-01



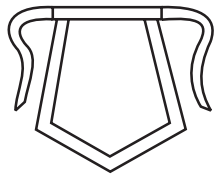
**Bistro / Continental Apron**—standard (38x36). Tie front or back. May add pockets. APR-06



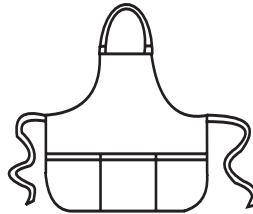
**Half Apron**—standard (20x10 {a}; 22x12 {b}; 20x13{c}). Tie front or back. Plain or multiple pockets. Single thickness unless otherwise specified. Squared or rounded corners. Pockets set on patch or folded up from bottom. APR-02



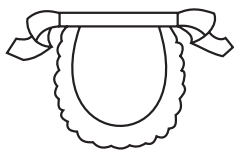
**Bib Apron**—standard (23x25 {a}; 25x29 {b}; 20x28 {c}). Single thickness unless otherwise specified. Standard D-ring closure. Tie front or back. Pocket styling patch or fold up from bottom. Square or rounded corners. Pencil pockets available. APR-09



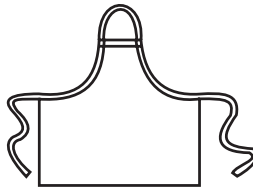
**Tea Apron**—standard (20x15). Tie back. May add pocket. Contrast trim. APR-03



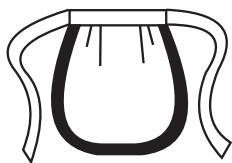
**Bib Apron**—as above. Variation of armhole, pockets, corners. APR-10



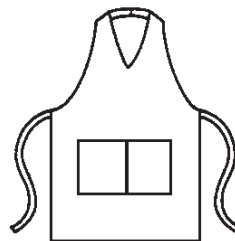
**Tea Apron**—standard (9x9 {a}; 13x15 {b}; 11x12 {c}). Tie Back, double thickness. May add pocket. Eyelet trim or contrast. APR-04



**Bib Apron Butcher Style**—standard (27x30). Single thickness. Tie front or back. Standard D-ring closure. APR-08



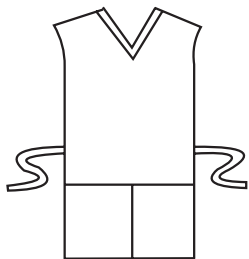
**Tea Apron**—standard (9x9 {a}; 13x15 {b}; 11x12 {c}). Tie back; double thickness. May add pocket. Lace or contrast trim. APR-05



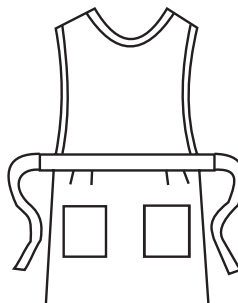
**Tux Apron**—standard (48x33). Vest style with wrap. Button closure around neck, tie front. Choice of pockets. Straight sides or standard "bat wings." APR-11

Prices may vary for alternate styling features. If you don't see it, ask ... [www.customuniformcompany.com](http://www.customuniformcompany.com)

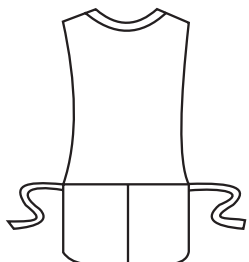
# APRONS



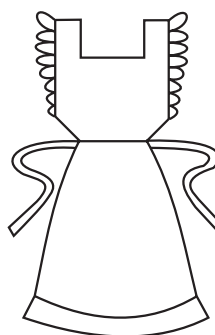
**Cobbler Apron**—standard (15x28). Front and back. Pull-over with side ties; snaps/Velcro, round/square corners, contrast bias, round/v-neck.  
APR-12



**Pinafore Apron**—standard (10x13+19x16 {a}; 10x13+35x24 {b}). Tie back, large bow. Adjustable button straps. Choice of pockets, ruffling—eyelet or fabric.  
APR-07



**Cobbler Apron**—as above. Variation of neck, corners. Choice of pockets.  
APR-13



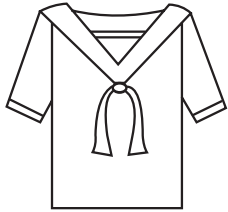
**Pinafore Apron**—standard (10x13+19x16 {a}; 10x13+35x24 {b}). Choice of pocket-styling, neckline.  
APR-14

**NOTES:**

All aprons have double-stitched pocketing, bartacking at all stress points.

*Prices may vary for alternate styling features. If you don't see it, ask ... (303) 366-4777*

# BLOUSES



**Sailor Blouse**—women's Middy pull-over {a} or button front {b}. Optional detachable bow, trim on cuffs. Contrasting color and trim. BLO-W-06



**Blouse**—women's long sleeved. Stand-up collar with keyhole, button, or zipper back. Button cuffs. BLO-W-03



**Sailor Blouse**---back view.



**Blouse**—women's pleated front, 3 button double breasted. Convertible collar with button cuffs. BLO-W-04



**Blouse**—women's <sup>3</sup>/<sub>4</sub> gathered sleeve, button cuff and front. Rounded collar. BLO-W-01



**Blouse**—women's short sleeved jewel neck. Pleated front, sleeve. Key-hole closure. BLO-W-05



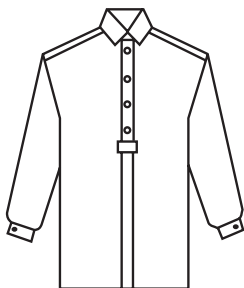
**Blouse**—women's long sleeved 2-piece collar. Concealed button front. BLO-W-02



**Blouse**—women's 2-piece collar long sleeved blouse. Second pocket optional. Button cuff, placket. May be button-down or laydown collar, long or short sleeved. BLO-W-07

Prices may vary for alternate styling features. If you don't see it, ask ... [www.customuniformcompany.com](http://www.customuniformcompany.com)

## BLOUSES



**Maternity Blouse**—women's button front with or without placket. Partial or full button front. With or without pleating. 2-piece collar. Long or short sleeved. Button cuff. May add roll-sleeve tab.  
BLO-W-08



**Aviator Blouse**—women's short sleeved or long sleeved. Button down flaps, 2-piece collar, placket front. May have pencil pocket. Shoulder straps. May add braid to straps and/or cuffs.  
BLO-W-09



**Peasant Blouse**—women's short or long sleeved gathered. Multiple ruffling. Options: Colored ribbons throughout; eyelet or lace trim; contrasting colors or fabrics; drawstring neckline.  
COS-W-BL-01

**NOTES:**

See men's Shirts for additional unisex styling.

Blouses available in long/short sleeved lengths, changeable pocketing and collar styling.

*Prices may vary for alternate styling features. If you don't see it, ask ... (303) 366-4777*

# COATS



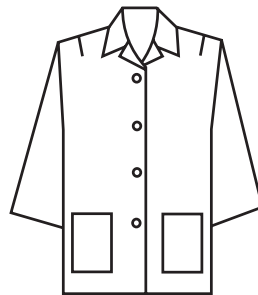
**Chef Coat**—unlined. Split cuffs. Short sleeves, single breast, knot buttons as per choice. May have trim around collar, cuffs. Optional belt in back. CHE-01



**Counter Coat**—unlined. COU-01



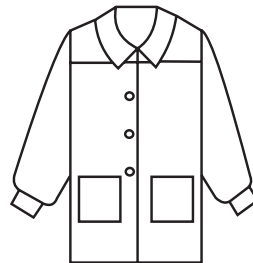
**Buscoat**—unlined. Choice of pockets. May add striping or braid. BUS-01



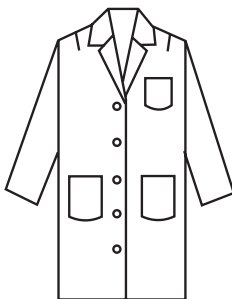
**Smock**—women's unlined. <sup>3</sup>/<sub>4</sub> sleeve. Choice of pockets and/or pocket styling. SMO-01



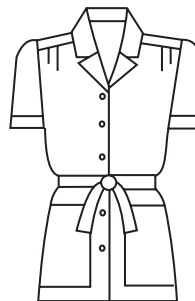
**Buscoat**—unlined. As above. Double breasted. Optional contrasting cuff. BUS-02



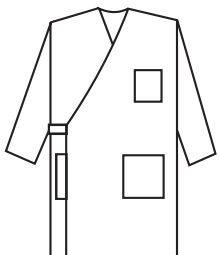
**Smock**—women's unlined Long sleeve, round collar, front yoke. SMO-02



**Labcoat**—unlined. Side-openings, vent. Choice of pockets. LAB-01



**Smock**—women's unlined May have contrasting trim, with or without belt. May have short sleeve or <sup>3</sup>/<sub>4</sub> sleeve with inside roll-tabs. SMO-03



**Wrap Labcoat**—unlined. Styling choices as above. LAB-02

Prices may vary for alternate styling features. If you don't see it, ask ... [www.customuniformcompany.com](http://www.customuniformcompany.com)

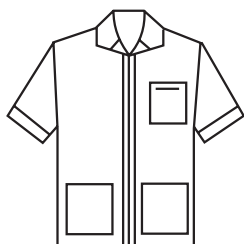
# COATS



**Smock**—unlined men's. Elbow sleeve, stand collar, patch pocket. Button or zip front. SMO-04



**Blazer**—full-lined women's notch lapel. Single breasted, 1 button. Upper, lower welt pockets. BLA-W-03



**Smock**—unlined men's. Convertible collar, zip front, patch pockets, cuff. May use trim. May choose button or zip front. SMO-05



**Blazer**—full-lined women's notch lapel. Single breasted, 2 button. Upper welt, lower besom pockets. BLA-W-04



**Smock**—unlined men's. Convertible collar, button front, pleated pockets, cuffs on short sleeve. SMO-06



**Blazer**—full-lined men's notch lapel. Single breasted, 2 button. Upper welt, lower besom pockets. One inside pocket. BLA-M-04



**Blazer**—full-lined women's cardigan. 1 button, 1 to button. Besom pockets. BLA-W-01



**Blazer**—full-lined men's peak lapel. 3 button, 2 to button. Upper, lower welts. One inside pocket. May use contrasting trim, braid, or wear as is. BLA-M-06



**Blazer**—full-lined women's peak lapel. 3 button, 1 to button. Upper welt, lower besom pockets. BLA-W-02



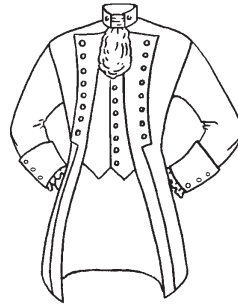
**Blazer**—full-lined men's peak lapel. 2 button, 1 to button. Upper welt, lower besom pockets, one inside pocket. BLA-M-05

Prices may vary for alternate styling features. If you don't see it, ask ... (303) 366-4777

# COATS



**Coat**—full-lined men's notched lapel. Single breasted, 4 button. Upper and lower welt pockets. One inside pocket. May add contrasting trim or braid.  
COA-M-01



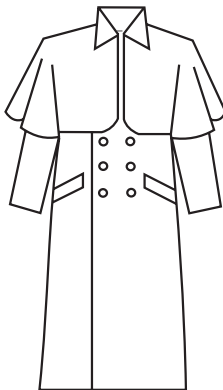
**Federal Coat**—full-lined with optional detachable vestee. Contrasting trim, braid, fabric as per request. Cut-away style. Back has 2 buttons at waist. Available with back center vent. One inside pocket. COS-W/M-CO-01



**Coat**—full-lined men's fold-back reverse. Stand-up collar. May use contrasting fabric, colors, braid.  
COA-M-02



**Gambler's Coat**—full-lined with notched lapels. 3 button single breasted, 2 lower flap pockets. Back has 2 buttons at waist. Back center vent. Slightly fuller from waist to hem.  
COS-M-CO-02



**Overcoat**—full-lined men's 2-piece collar. 3 button, double breasted. Lower welt pockets, one inside pocket. Detachable cape. May use contrasting trim or braid. Additional buttons on cuff. COA-M-03



**Overcoat**—full-lined men's notched lapel. Single breasted, 4 button. Lower welt, one inside pocket. Optional belt in back, sleeve buttons. May have peak lapel or modify to double breasted styling.  
COA-M-04

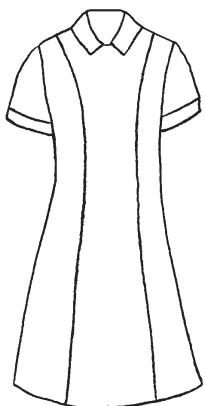
**NOTES:**

All blazers/coats may be made in men's or women's styling; may vary in choice of pocketing, button closure, back vents. All blazers/coats made with or without contrasting trim, braid, additional regalia.

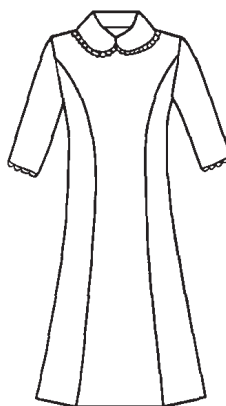
2" easy-alter sleeves, sweat shields, hmo fronts, 2 inside pockets available upon request.

Prices may vary for alternate styling features. If you don't see it, ask ... [www.customuniformcompany.com](http://www.customuniformcompany.com)

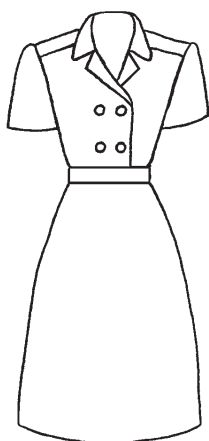
# DRESSES



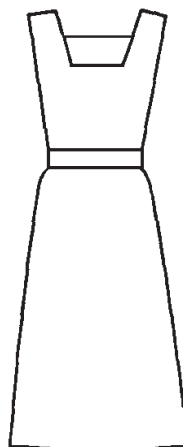
**Dress**—A-line zip-back short sleeve with detachable collar. Cuffs. Optional button or zip front. Collar may be permanent; cuffs omitted. Contrasting fabric, pocket if desired. DRE-01



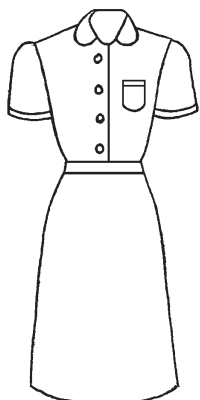
**Dress**—soft flair, arched front with  $\frac{3}{4}$  sleeve. Jewel neck with detachable collar. Matching lace trim on sleeve. Zip back. May adapt to button or zip front. DRE-04



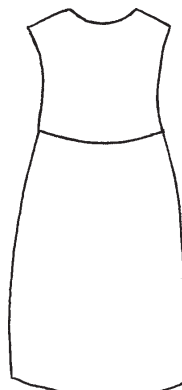
**Dress**—shirtwaist with set-in side pockets. Short sleeve. Double breasted 2 button. Choice shoulder strap, pleat in back with yoke. Contrasting trim. DRE-02



**Jumper**—With or without pockets. JUM-01



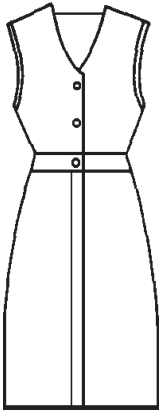
**Dress**—modified shirtwaist with single button styling; may add placket, alternate hidden zipper. With or without pocket. DRE-03



**Maternity Jumper**—with inset pockets. Button front or back. Trim around collar and/or hem available. JUM-02

*Prices may vary for alternate styling features. If you don't see it, ask ... (303) 366-4777*

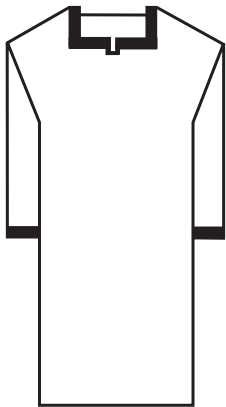
# DRESSES



**Jumper**—coat style with attached self-belt. Button top only, may add pockets, zipper, or buttons down front.  
JUM-03

**NOTES:**

Most dresses made with standard 2" hem. Additional outlets, sweatshields, upon request.



**Caftan**—unisex styling pull-over. Ankle length. Braid around sleeve, shoulders, neck and hem if desired. Side vents at hem. Opening in front. May add zipper to back for closed front.  
COS-W/M-DR-01



**Peasant Dress**—back closure of zipper or buttons. Scoop neck with added trim and/or lace/eyelet. Puffed sleeves, 1 set-in pocket. Added trim around hem. (apron additional—APR-04).  
COS-W-DR-02

*Prices may vary for alternate styling features. If you don't see it, ask ... [www.customuniformcompany.com](http://www.customuniformcompany.com)*

# JACKETS



**Jacket**—outerwear style. Raglan sleeve, slash pocket, permanent or zip-in/zip-out liner. Knit cuffs, waistband. Convertible collar. May add additional pockets, hood, change collar to knit. Unisex. JAC-W/M-01



**Eton**—men's rounded front bolero style. Notch lapel or without collar. Braid, trim or embroidery additional. COS-M-ET-01



**Jacket**—as above with set-in sleeve, Italian knit collar. JAC-W/M-02



**Eton**—women's & men's. 1 button link/single breasted. Notch lapel. ETO-W/M-04



**Eton**—women's & men's shawl collar. Single breasted, 3 button. ETO-M/W-01



**Eton**—men's 5 button double breasted. Stand-up collar. ETO-M-02



**Eton**—men's & women's 3 button double breasted. Notch lapel with welt pockets (real or imitation). ETO-W/M-05



*Prices may vary for alternate styling features. If you don't see it, ask ... (303) 366-4777*

# JACKETS



**Eton**—men's & women's 7-8 button single breasted. Stand-up collar. ETO-W/M-06



**Eton**—men's squared front bolero with peak lapel. Choice of embroidery, braid, or added decoration. COS-M-ET-02



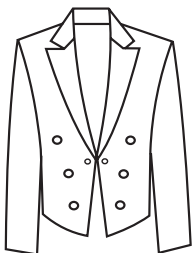
**Eton**—men's & women's 2 button single breasted cardigan. ETO-W/M-07



**NOTES:**

Lined or unlined, 2" easy-alter sleeve, sweat-shields, 2 inside pockets, upon request.

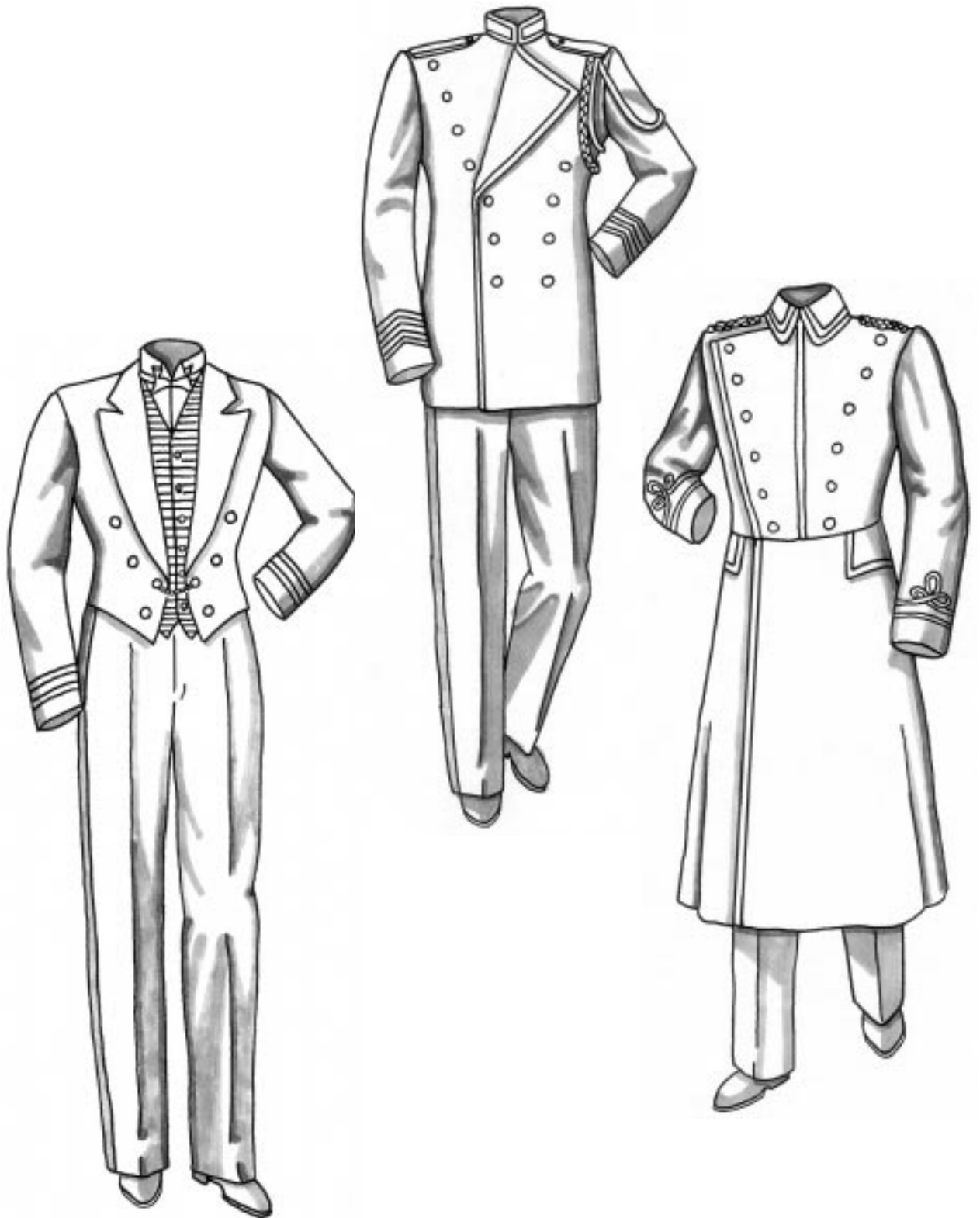
Shoulder straps, loops; shoulder knots and/or cords; citation cords, decorative braid, trim, embroidery available upon request].



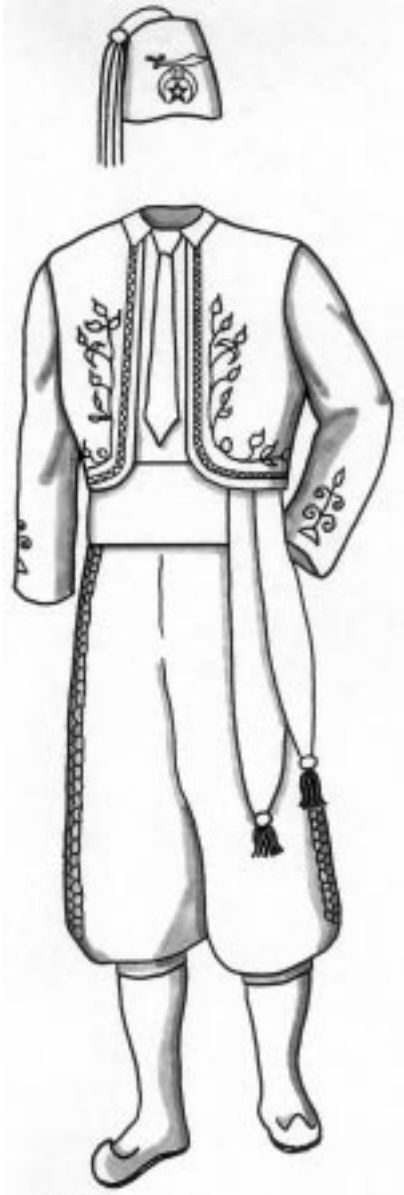
**Eton**—(as above ETO-W/M-04). "V" angled 6 button arrangement for decorative design. ETO-W/M-08

*Prices may vary for alternate styling features. If you don't see it, ask ... [www.customuniformcompany.com](http://www.customuniformcompany.com)*

# HOTEL



SHRINE



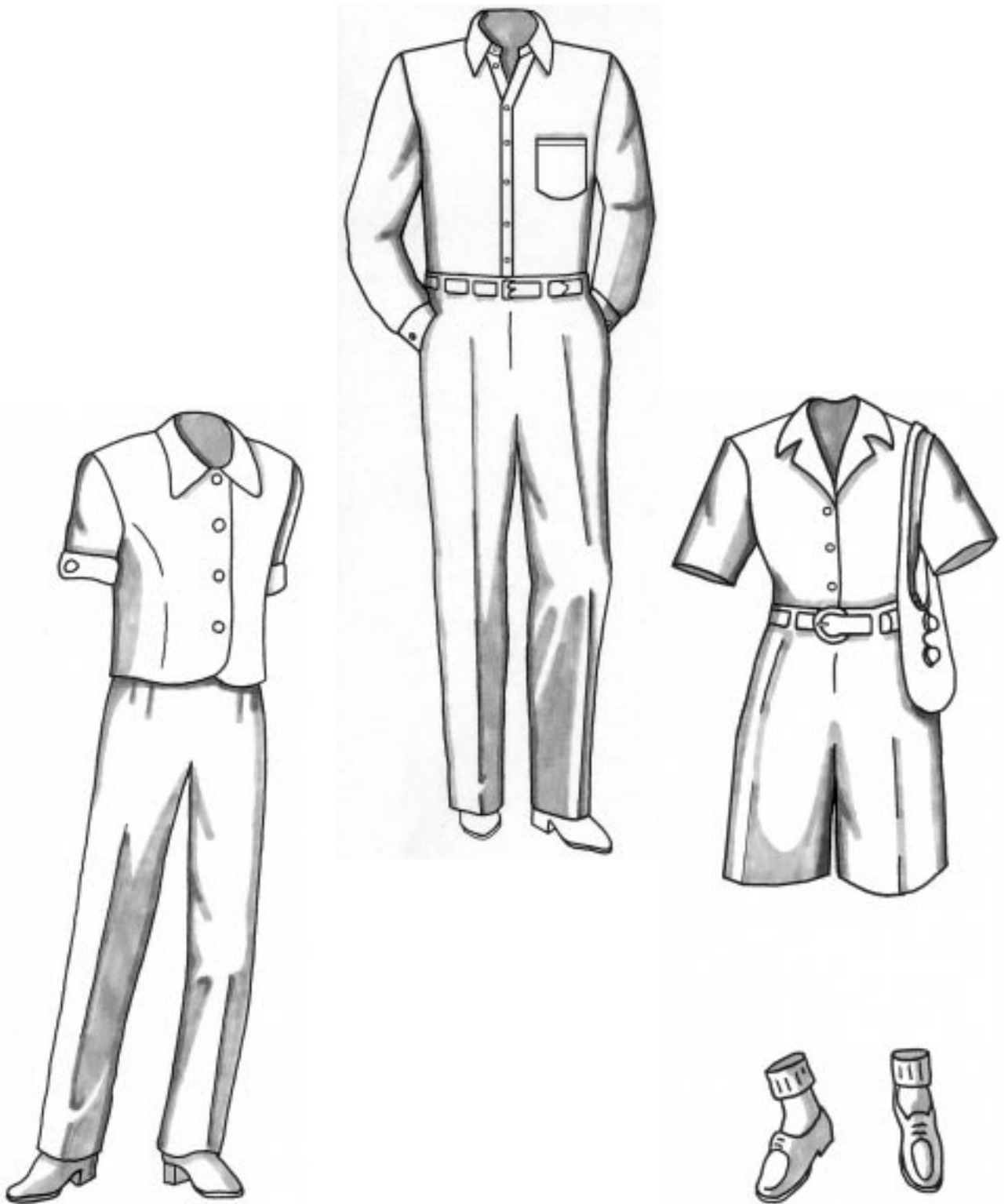
# PEASANT



# COSTUME



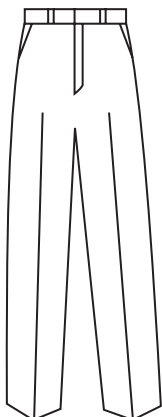
# CASUAL



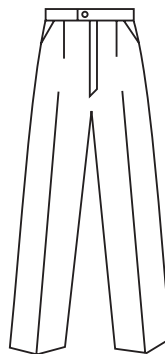
# CORPORATE



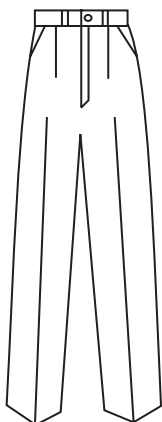
# PANTS



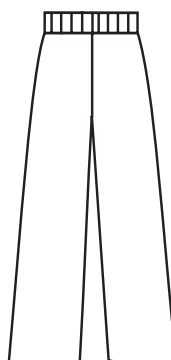
**Pants**—men's. Plain front. Straight leg, gripper closure. Belt loops, 2 side and hip pockets. PAN-M-01



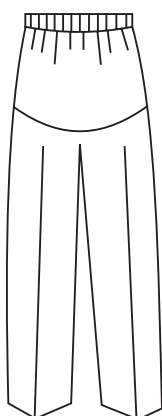
**Pants**—women's. Plain front slacks. Side pockets, straight leg, button front. May have belt loops. PAN-W-04



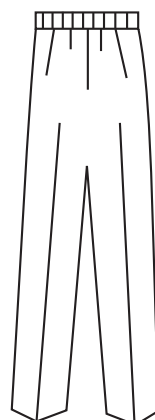
**Pants**—men's. Pleated front, button closure. As above. PAN-M-02



**Pants**—women's palazzo wide leg. Elasticized pull-on waist or button front. PAN-W-05



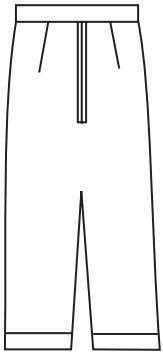
**Maternity Pants**—women's with stretch panel. Elasticized pull-on waist. PAN-W-03



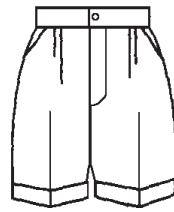
**Pull-on Pants**—men's or women's. Elasticized waist. May add side pockets. PAN-W/M-06

*Prices may vary for alternate styling features. If you don't see it, ask ... (303) 366-4777*

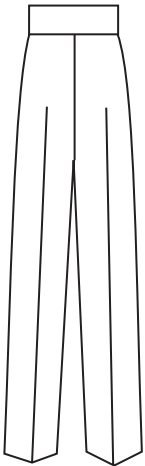
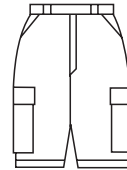
# PANTS



**Knickers**—women’s or men’s. Zipper front. Straight leg, or fuller “plus-4’s.” Belt loops optional. May have side and/or hip pockets. Adjustable band below knee. PAN-W/M-07



**Shorts**—women’s or men’s camp style. Zip front, 2 side pockets. May add hip pockets (patch), cuff, bush pockets. SHO-W/M-01

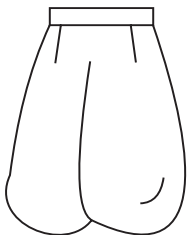


**Band Pants**—men’s or women’s high-waist. Adjustable with zipper and Velcro. May or may not have side pockets. PAN-W/M-08

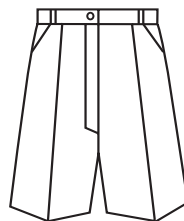


**Shorts**—women’s or men’s draw-string pull-on. Side pockets may be added. SHO-W/M-02

(May lengthen for pant, with or without elasticized cuff—PAN-W/M-09)



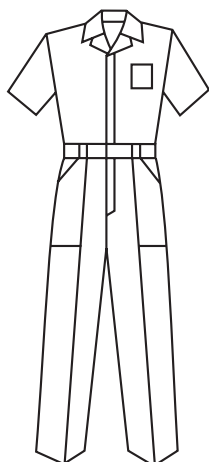
**Arabian Bloomers**—men’s. Adjustable waist zippers. Optional side pockets. Velcro cuff or elastic below knee. May have contrast trim, braid. COS-M-PA-01



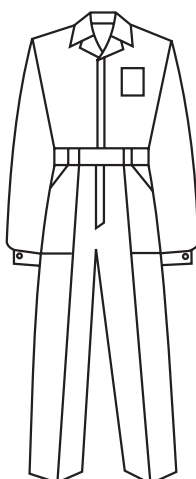
**Shorts**—men’s or women’s standard style, plain or pleated front. Zip front. 2 side pockets. Belt loops optional. No cuff. SHO-W/M-03

Prices may vary for alternate styling features. If you don't see it, ask ... [www.customuniformcompany.com](http://www.customuniformcompany.com)

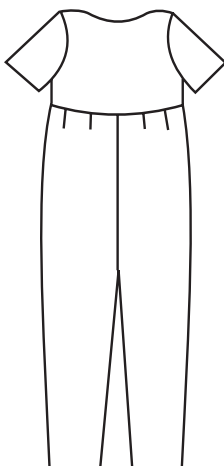
# PANTS



**Jumpsuit**—men's or women's short sleeve convertible collar. May have buttons, snaps or zipper. (Zipper may be 1 or 2-way.) Concealed placket or not. 2 side and hip pockets. Additional pockets available. Back yoke, action shoulders, attached self-belt options. JUM-W/M-01



**Jumpsuit**—women's or men's long sleeved as above. JUM-W/M-02



**Maternity Jumpsuit**—may have button front. Eliminate sleeves for romper style. JUM-W-03

**NOTES:**

Pants can be made with full elastic or 1/2" elasticized waist, suspender buttons, adjustable waist tabs. Dress, Western, or military cut.

Belt loops upon request standard (1/2"), keystone, or tunnel (1"-5"). Pants made open bottom, or hemmed to length.

All zippers are metal; length includes 3" hem allowance.

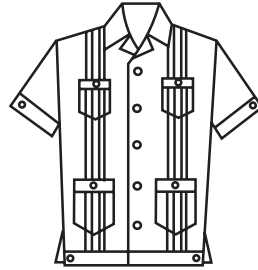
May have inside watch pocket, variable side-pocket styling: 1/8, 1/4, Western; variable hip-pocket styling: Besom, patch, Western, flap (with or without tab). 1 or 2 pockets on hip.

*Prices may vary for alternate styling features. If you don't see it, ask ... (303) 366-4777*

# SHIRTS



**Shirt**—men's convertible collar 2 pocket industrial styling with button cuff. SHI-M-01



**Guayabera Shirt**—men's. 4 pocket pleated front, convertible collar, button cuff; hem with side vents. SHI-M-05



**Aviator Shirt**—men's shoulder straps with buttons. Placket front, 2 pocket flap styling. Long or short sleeved. May have pencil pocket, pleated pockets. SHI-M-02



**Safari Shirt**—men's with shoulder straps, cuff, pleated pockets with flaps. Placket front, 2 lower additional pockets, optional. Long or short sleeved. SHI-M-06



**Shirt**—men's short sleeved shirt with pocket. Two-piece collar. May use convertible collar styling, add cuffs, eliminate placket. SHI-M-03



**Racing Shirt**—men's short sleeved. Front and back yoke, optional pockets. Multiple designs. SHI-M-07



**Camp Shirt**—unisex. 1 or 2 pocket convertible collar with cuff. Optional yoke. Sport shirt. SHI-M-04



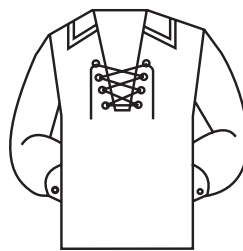
**Shirt-Jac**—men's long sleeved with shoulder straps, 2 pockets, button front, stitched hem, button cuffs. Convertible collar. SHI-M-08

Prices may vary for alternate styling features. If you don't see it, ask ... [www.customuniformcompany.com](http://www.customuniformcompany.com)

# SHIRTS



**Shirt-Jac**—men's short sleeved as above with additional trim, adjustable side-tabs. SHI-M-09



**Peasant Shirt**—men's. May use grommets with laces. COS-M-SH-02



**Cowboy/Cowgirl Shirt**—men's and women's Western styling. Front, back yoke. Long or short sleeve. Placket front, button cuff. Snap or button closure. SHI-W/M-10



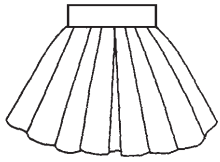
**Peasant Shirt**—men's. Stand-up collar, yoke front and back. COS-M-SH-03



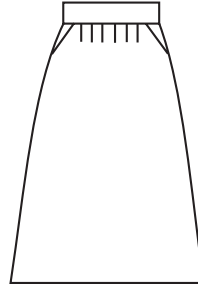
**Drum & Bugle Corps Shirt**—women's and/or men's pull-over. Multiple designs. COS-W/M-SH-01

*Prices may vary for alternate styling features. If you don't see it, ask ... (303) 366-4777*

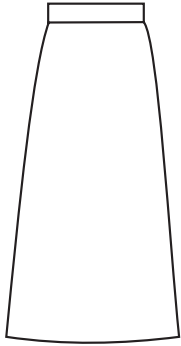
# SKIRTS



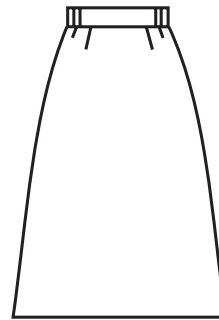
**Cheerleader Skirt**—pleated. SKI-W-01



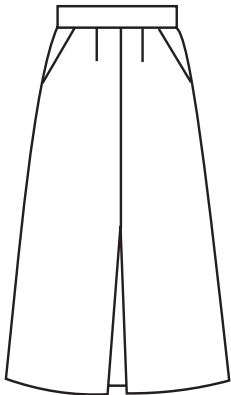
**Skirt**—side pockets, gathering. Dirndl style. SKI-W-12



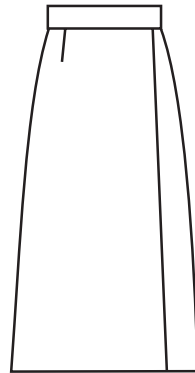
**Skirt**—straight, no pockets. SKI-W-02



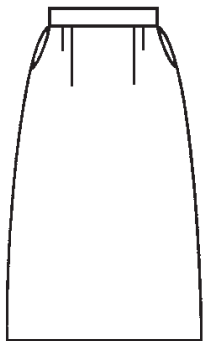
**Skirt**—elasticized sides at waist. Dirndl style. SKI-W-05



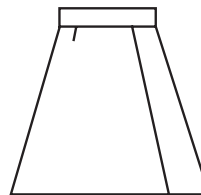
**Culotte**—shirred, slight gathering at waist. SKI-W-03



**Skirt**—straight wrap. SKI-W-06



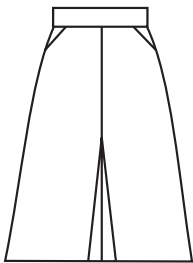
**Skirt**—side pockets, shirring. SKI-W-04



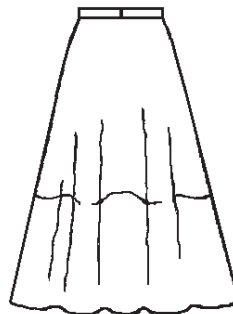
**Skort**—skirt-short with elasticized pull-on waistband. Gathered, with optional pockets. SKI-W-07

Prices may vary for alternate styling features. If you don't see it, ask ... [www.customuniformcompany.com](http://www.customuniformcompany.com)

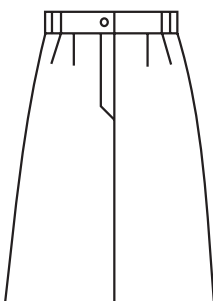
# SKIRTS



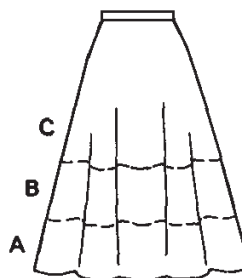
**Skirt**—A-line style with center pleat. Shirring at waist, side pockets. SKI-W-08



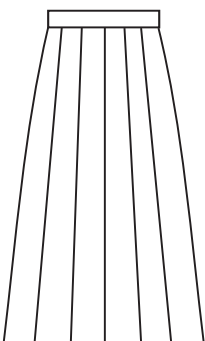
**Peasant Skirt**—ballerina length. Zipper. May add bottom ruffle. COS-W-SK-01



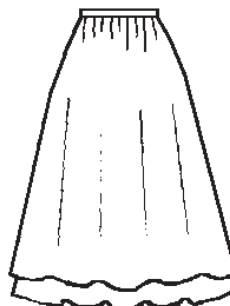
**Skirt**—4-panel, zip front, belt loops. Optional pockets. SKI-W-09



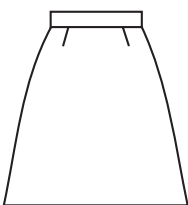
**Peasant Skirt**—as above in mid-calf {a}, knee {b}, and mid-thigh {c} lengths. COS-W-SK-02



**Concert Skirt**—full or ballerina length, circle or 1/2 circle. Gathered. SKI-W-10



**Peasant Skirt**—as above. Gathered with ruffled underskirt—attached or separate. COS-W-SK-03

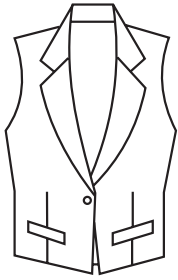


**Mini-Skirt**—short, shirred. Pockets optional. Additional styling available. SKI-W-11

**NOTES:**  
Most skirts made with 3" adjustable hem. Most may have side or back closure—button or gripper with zipper. Velcro available for wider waistbands and adjustability. Side tabs also available for adjustability. Hem lengths are standardized—may be specified by customer, however.

Prices may vary for alternate styling features. If you don't see it, ask ... (303) 366-4777

# VESTS



**Vest**—men's and women's.  
1 button single breasted.  
Welt pockets.  
VES-W/M-01



**Vest**—men's and women's  
4 button single breasted  
cardigan. VES-W/M-05



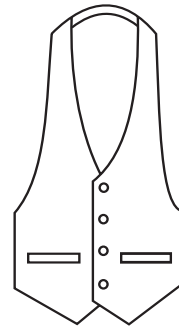
**Vest**—women's and men's.  
3 button, double breasted.  
VES-W/M-02



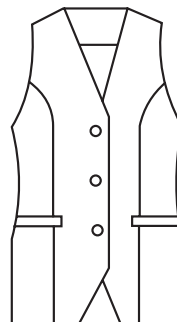
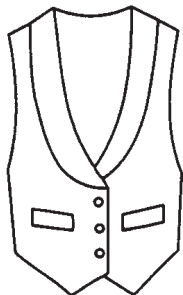
**Vest**—women's shawl collar  
3 button single breasted.  
VES-W-03 (May be made as  
men's VES-M-03).



**Tux-Vest**—backless with  
adjustable buckle strap;  
button or Velcro collar  
strap. VES-W/M-06



**Tunic Vest**—women's  
long 3 button single  
breasted. VES-W-07

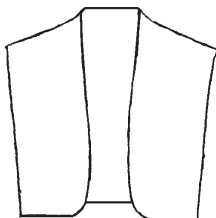


Prices may vary for alternate styling features. If you don't see it, ask ... [www.customuniformcompany.com](http://www.customuniformcompany.com)

## VESTS



**Bolero Vest**—men's and women's squared bottom. No buttons. May add braid, trim, embroidery.  
COS-W/M-VE-01



**Bolero Vest**—men's and women's rounded bottom. Trim as above.  
COS-W/M-VE-02









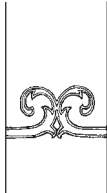

**NOTES:**


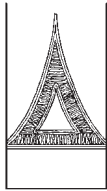

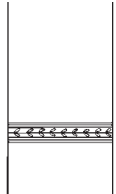

Vests may be lined or unlined, may have 1 or 2 inside pockets as specified. Elastic, belt in back, adjustable side-button tabs, are sizing options. May have back made of self-fabric, or contrasting lining material. Long or short tunic styling without buttons available.

Most vests may alternate collar stylings, imitation or real pockets, pocket stylings.

*Prices may vary for alternate styling features. If you don't see it, ask ... (303) 366-4777*

# TRIM STYLES

	<b>Sleeve-Trim With Braid, Soutache, Cloth Stripe/ Cuff</b> BS-1		S-4
	BS-2		
	BS-3		
	BS-4		S-5
	BS-5		
	BS-6		S-6
	BS-7		

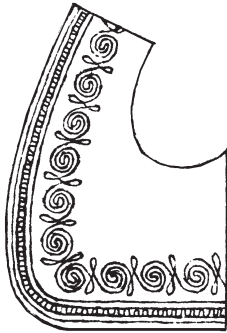
	<b>Sleeve-Trim With Embroidery</b> S-1		S-7
	S-2		
	S-3		S-8

**NOTES:**  
All embroidery requires a computerized tape or disc. Customer pricing is based on the size and complexity of the design.

Prices may vary for alternate styling features. If you don't see it, ask ... [www.customuniformcompany.com](http://www.customuniformcompany.com)

# TRIM STYLES

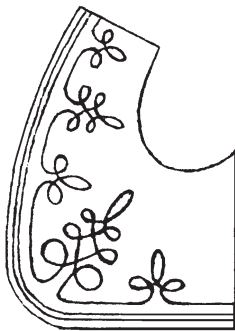
Vest-Trim With Embroidery



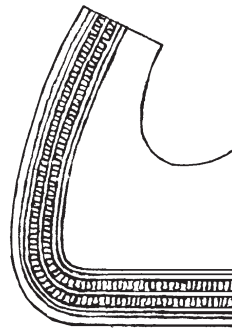
V-1



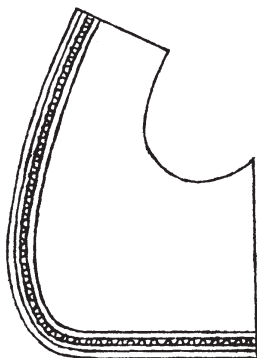
V-4



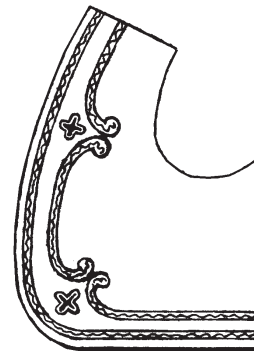
V-2



V-5



V-3



V-6

**NOTES:**

All embroidery requires a computerized tape or disc. Customer pricing is based on the size and complexity of the design.

*Prices may vary for alternate styling features. If you don't see it, ask ... (303) 366-4777*

# TRIM STYLES



**Collar Trim**—notch or peak lapel; may use braid, cloth, soutache, cord edge.



**Citation Cords**—detachable. Silver or gold tips. Various styles of cording braid available.



**Collar Trim**—may fit stand collar; as above.



**Pant Striping**—may use a single stripe of contrasting cloth, braid, or soutache.



**Shoulder Straps Or Loops**—use of trim as above.



**Pant Striping**—may use multiple stripes of various colors, trims, fabrics.



**Shoulder Knots**—may be sewn on or detachable. Various knot patterns.

**NOTES:**  
Wide variety of colors, braid styles designs available.

Prices may vary for alternate styling features. If you don't see it, ask ... [www.customuniformcompany.com](http://www.customuniformcompany.com)



# SIZING

Women's Blouses and Shirts													
Order Size	4	6	8	10	12	14	16	18	20	22	24	26	28
Bust	33	34	35	36	37 <sup>1/2</sup>	39	41	43	45	47	49	51	53
Hips (or smaller)	36	37	38	39	40 <sup>1/2</sup>	42	44	46	48	50	52	54	56

Women's Coats, Vests, Etons, Pants, Skirts											
Women's Body Measurements (inches)											
Order Size	4	6	8	10	12	14	16	18	20	22	24
Bust	33	34	35	36	37 <sup>1/2</sup>	39	41	43	45	47	49
Waist	25	26	27	28	29 <sup>1/2</sup>	31	33	35	37	39	41
Hips		37	38	39	40 <sup>1/2</sup>	42	44	46	48	50	52
	XS	XS	S	S	M	M	L	L	XL	XL	XXL

Men's Shirts														
Long or Short Sleeves (order by neck size)	14	14 <sup>1/2</sup>	15	15 <sup>1/2</sup>	16	16 <sup>1/2</sup>	17	17 <sup>1/2</sup>	18	18 <sup>1/2</sup>	19	19 <sup>1/2</sup>	20 <sup>1/2</sup>	21 <sup>1/2</sup>
Sleeve length:	31	31	31	31										
Note: Shirts with 36" or 38" sleeves	32	32	32	32	32	32	32	32						
	33	33	33	33	33	33	33	33	33	33	33	33		
also have 4" longer body	34	34	34	34	34	34	34	34	34	34	34	34	34	
			35	35	35	35	35	35	35	35	35	35		
Long Body			36	36	36	36	36	36	36	36	36	36	36	36
Long Body				38		38		38		38		38	38	38
Short Sleeve														
Long Body	S	X S	M	X M	L	X L	XL	X XL	XXL	X XXL	XXXL	X XXXL	X 4XL	X 5XL

Prices may vary for alternate styling features. If you don't see it, ask ... (303) 366-4777

# SIZING



Men's Coats, Vests, Etons										
<b>Short</b>										
Size	38	39	40	41	42	43	44	46	48	50
Chest	38	39	40		42		44	46		
Sleeve Length	16 <sup>1</sup> / <sub>4</sub>	16 <sup>1</sup> / <sub>2</sub>	16 <sup>1</sup> / <sub>2</sub>		16 <sup>1</sup> / <sub>2</sub>		16 <sup>1</sup> / <sub>2</sub>	16 <sup>1</sup> / <sub>2</sub>		
Coat Length	29	29 <sup>1</sup> / <sub>4</sub>	29 <sup>1</sup> / <sub>2</sub>		29 <sup>1</sup> / <sub>2</sub>		29 <sup>3</sup> / <sub>4</sub>	30		
Fits										
Waist	32	33	34		36		38	40		
<b>Regular</b>										
Size	38	39	40	41	42	43	44	46	48	50
Chest	38	39	40	41	42	43	44	46	48	50
Sleeve Length	17 <sup>1</sup> / <sub>2</sub>	17 <sup>1</sup> / <sub>2</sub>	17 <sup>1</sup> / <sub>2</sub>	17 <sup>1</sup> / <sub>2</sub>	17 <sup>1</sup> / <sub>2</sub>	17 <sup>1</sup> / <sub>2</sub>	17 <sup>1</sup> / <sub>2</sub>	17 <sup>1</sup> / <sub>2</sub>	17 <sup>1</sup> / <sub>2</sub>	17 <sup>1</sup> / <sub>2</sub>
Coat Length	30 <sup>1</sup> / <sub>2</sub>	30 <sup>3</sup> / <sub>8</sub>	30 <sup>1</sup> / <sub>2</sub>	30 <sup>5</sup> / <sub>8</sub>	30 <sup>3</sup> / <sub>4</sub>	30 <sup>7</sup> / <sub>8</sub>	31	31 <sup>1</sup> / <sub>2</sub>	31 <sup>1</sup> / <sub>2</sub>	31 <sup>3</sup> / <sub>4</sub>
Fits										
Waist	32	33	34	35	36	37	38	40	42	44
<b>Long</b>										
Size	38	39	40	41	42	43	44	46	48	50
Chest	38	39	41	41	42	43	44	46	48	50
Sleeve Length	18 <sup>1</sup> / <sub>2</sub>	18 <sup>1</sup> / <sub>2</sub>	18 <sup>1</sup> / <sub>2</sub>	18 <sup>1</sup> / <sub>2</sub>	18 <sup>1</sup> / <sub>2</sub>	18 <sup>1</sup> / <sub>2</sub>	18 <sup>1</sup> / <sub>2</sub>	18 <sup>1</sup> / <sub>2</sub>	18 <sup>1</sup> / <sub>2</sub>	18 <sup>1</sup> / <sub>2</sub>
Coat Length	31 <sup>3</sup> / <sub>4</sub>	31 <sup>7</sup> / <sub>8</sub>	32	32 <sup>1</sup> / <sub>8</sub>	32 <sup>1</sup> / <sub>2</sub>	32 <sup>3</sup> / <sub>8</sub>	32 <sup>1</sup> / <sub>2</sub>	32 <sup>3</sup> / <sub>4</sub>	33	33 <sup>1</sup> / <sub>2</sub>
Fits										
Waist	32	33	34	35	36	37	38	40	42	44

**NOTES:**

All Measurements + or - 1/2 inch  
 Regulars over 5'7" to 5'11"  
 Shorts 5'3" to 5'7"  
 Longs over 5'11" to 6'2"  
 Extra Long over 6'2" (please call)

All sizing charts are based on body measurements with normal allowance for ease of movement built into each garment. However, human bodies and shapes differ; thus, these charts are for guidance only. If measurements fall between sizes, order the next larger size.  
**WE WILL NOT BE RESPONSIBLE FOR MIS-FITTING GARMENTS FROM THE USE OF THESE SIZE CHARTS.**

Prices may vary for alternate styling features. If you don't see it, ask ... [www.customuniformcompany.com](http://www.customuniformcompany.com)



## ORDERING INFORMATION

**Credit:** Approval for net 30 billing subject to OK of credit application. Good D&B rating, 3 trade references, bank. Without credit: 50% advance deposit; balance with delivery. VISA/ Master Card/Discover; cash; Guaranteed Check.

**Returns:** All orders custom-made will not be accepted for return unless merchandise is defective. We maintain the highest quality with our garments. If, however, there is an error or flaw, request for return must be made in writing. No merchandise accepted without written authorization. Returns must be made within 7 days of receipt of merchandise. Garments must be new: Not worn, laundered, altered.

**Alterations:** Unless mis-sizing is our error, there will be a charge.

**Purchase Orders:** Each order must have a purchase order with your company name, bill & ship-to address, telephone & FAX, anticipated due date, and purchase order number. We cannot be held responsible for any details not in writing. Once an order is cut, it cannot be canceled.

**Fabric Suggestions For Garments:**

(additional or special fabrics available upon request)

**NOTE:** All of our colors are vat-dyed through & through, will not fade; however, some shades will crock prior to first washing. For garments that blend 2 or more colors where a very deep color may crock onto a lighter color, a first-time hand-washing of the garment is recommended.

**Fabrics in multiple weights, weaves, & colors:**

100% Cotton	Broadcloth
Cotton & Polyester Blends	Poplin
Polyester & Cotton Blends	Oxford Cloth
100% Polyester	Twill
Polyester & Wool Blends	Serge
Wool & Polyester Blends	Gabardine
100% Wool	Satin
	Whipcord

Custom Uniform Company  
Division of Dave Hindlemann & Assoc., Inc.  
1445 Dayton Street  
Aurora, CO 80010-3232 USA

Phone: (303) 366-4777  
Fax: (303) 366-0203  
E-mail: [customuniformco@earthlink.net](mailto:customuniformco@earthlink.net)  
<http://www.customuniformcompany.com>

*Prices may vary for alternate styling features. If you don't see it, ask ... (303) 366-4777*

# INDEX



ACCESSORIES .....	2
(cummerbunds, drapes, hats, scarves, ties, collars)	
APRONS .....	3
BLOUSES .....	5
COATS .....	7
(blazers, doormen coats, chef coats, labcoats, smocks)	
DRESSES .....	10
(includes jumpers)	
ENSEMBLES	
Casual .....	18
Corporate .....	19
Costume .....	17
Hotel .....	14
Peasant .....	16
Shrine .....	15
JACKETS .....	12
(etons, outerwear)	
ORDERING INFORMATION .....	34
PANTS .....	20
(includes jumpsuits, shorts)	
SHIRTS .....	23
SIZING .....	32
SKIRTS .....	25
(includes culottes)	
TRIMSTYLES .....	29
(includes braid, embroidery)	
VESTS .....	27

Custom Uniform Company  
Division of Dave Hindlemann & Assoc., Inc.  
1445 Dayton Street  
Aurora, CO 80010-3232 USA

Phone: (303) 366-4777  
Fax: (303) 366-0203  
E-mail: [customuniformco@earthlink.net](mailto:customuniformco@earthlink.net)  
<http://www.customuniformcompany.com>